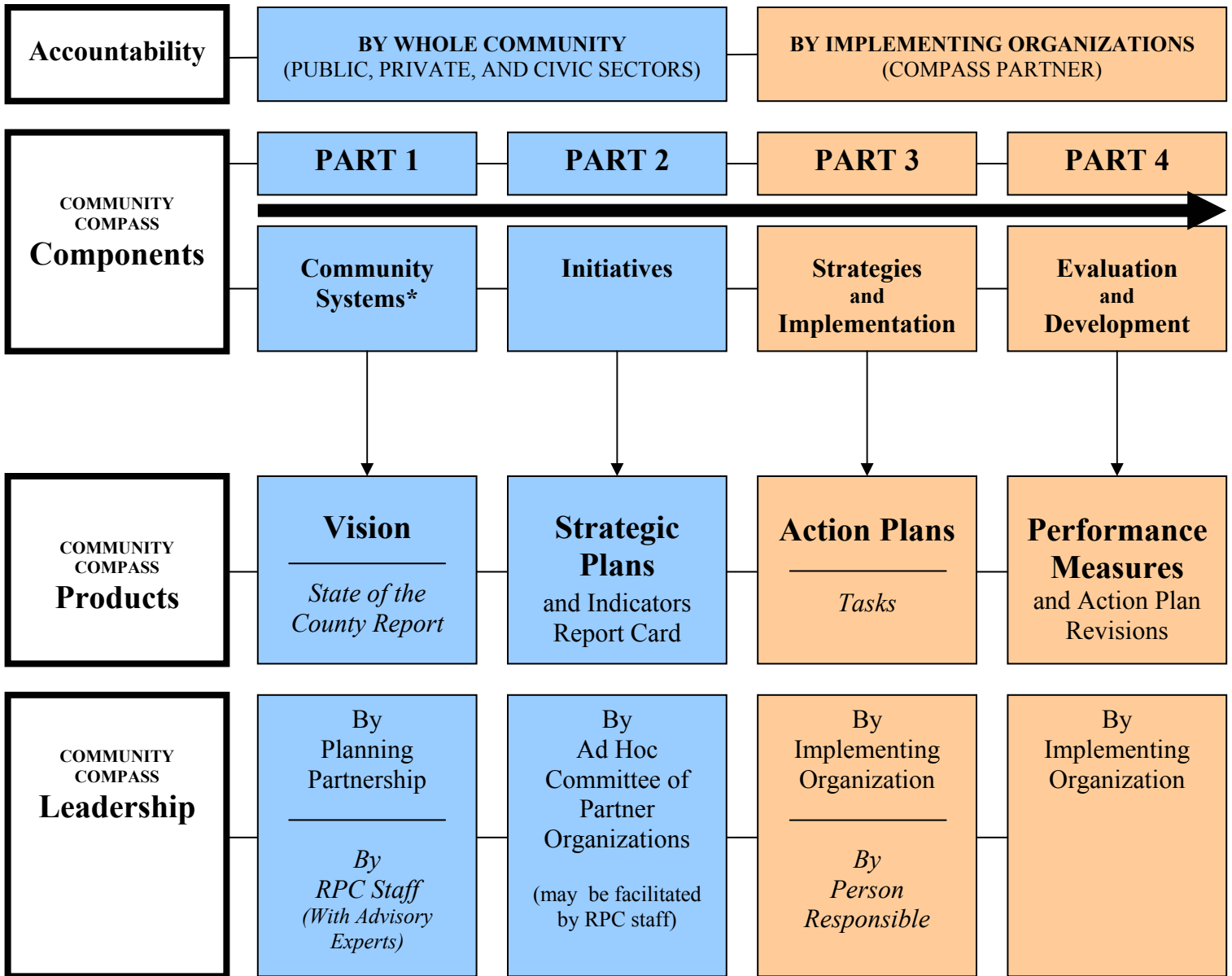




COMMUNITY COMPASS
(Comprehensive Master Plan and Strategies for Hamilton County)

Implementation Structure and Accountability



*** COMMUNITY SYSTEMS:**

- | | | |
|--|-------------------------------------|--|
| 1. CIVIC ENGAGEMENT AND SOCIAL CAPITAL | 5. EDUCATION | 9. HEALTH AND HUMAN SERVICES |
| 2. COMMUNITY SERVICES | 6. ENVIRONMENT | 10. HOUSING |
| 3. CULTURE AND RECREATION | 7. ENVIRONMENTAL AND SOCIAL JUSTICE | 11. LAND USE AND DEVELOPMENT FRAMEWORK |
| 4. ECONOMY AND LABOR MARKET | 8. GOVERNANCE | 12. MOBILITY |