

Appendix 2

Community COMPASS Process

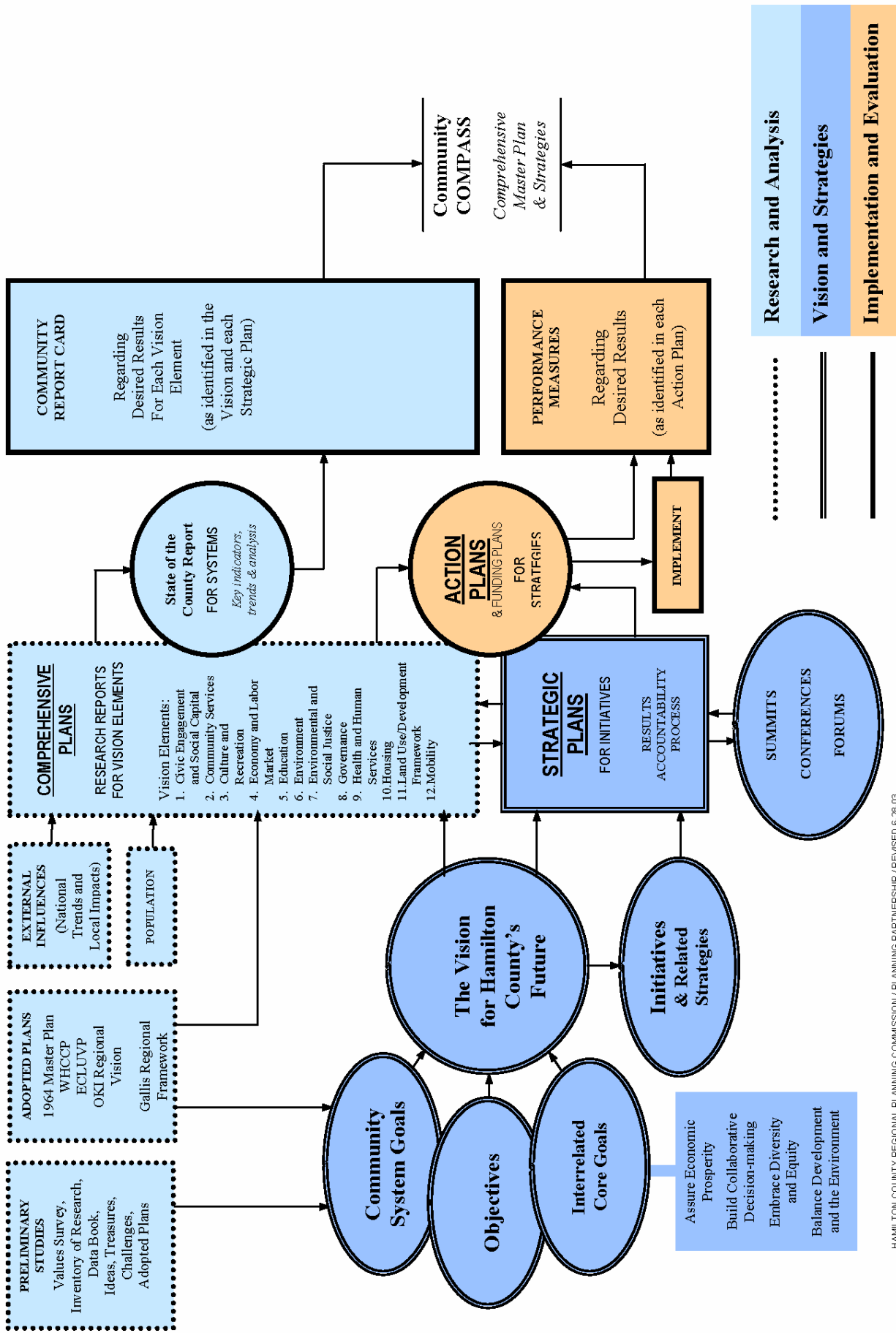
With the fragmented governance framework of 49 political jurisdictions, 23 school districts, and many more special purpose districts and overlapping community service areas, carrying out a comprehensive planning process in Hamilton County is a daunting task. This complexity is one reason why a comprehensive plan has not been attempted in Hamilton County for over 40 years.

When the Planning Partnership launched the Community COMPASS project, it challenged the community to produce a truly useful comprehensive plan developed using a bottom-up approach. It is apparent that collaborative decision-making and consensus-building on a variety of issues is vital to continued economic and social development in Hamilton County. It required creating a forum for government officials, civic organizations, business groups, and private individuals to all have equal standing and equal voice in charting the future growth, economic development, and social advancement in Hamilton County. The consensus that has been created through Community COMPASS is in itself an achievement as important, far-reaching, and historic as the new comprehensive plan.

In developing a broad vision with broad support, Community COMPASS ensures that community trends are anticipated, challenges are addressed, priorities are focused, and that our collaborative future is planned strategically, with full consideration given to all the potential impacts on project can have on another aspect of community life. This broad support will continue to be vital to the implementation and success of the *2030 Plan and Implementation Framework*.

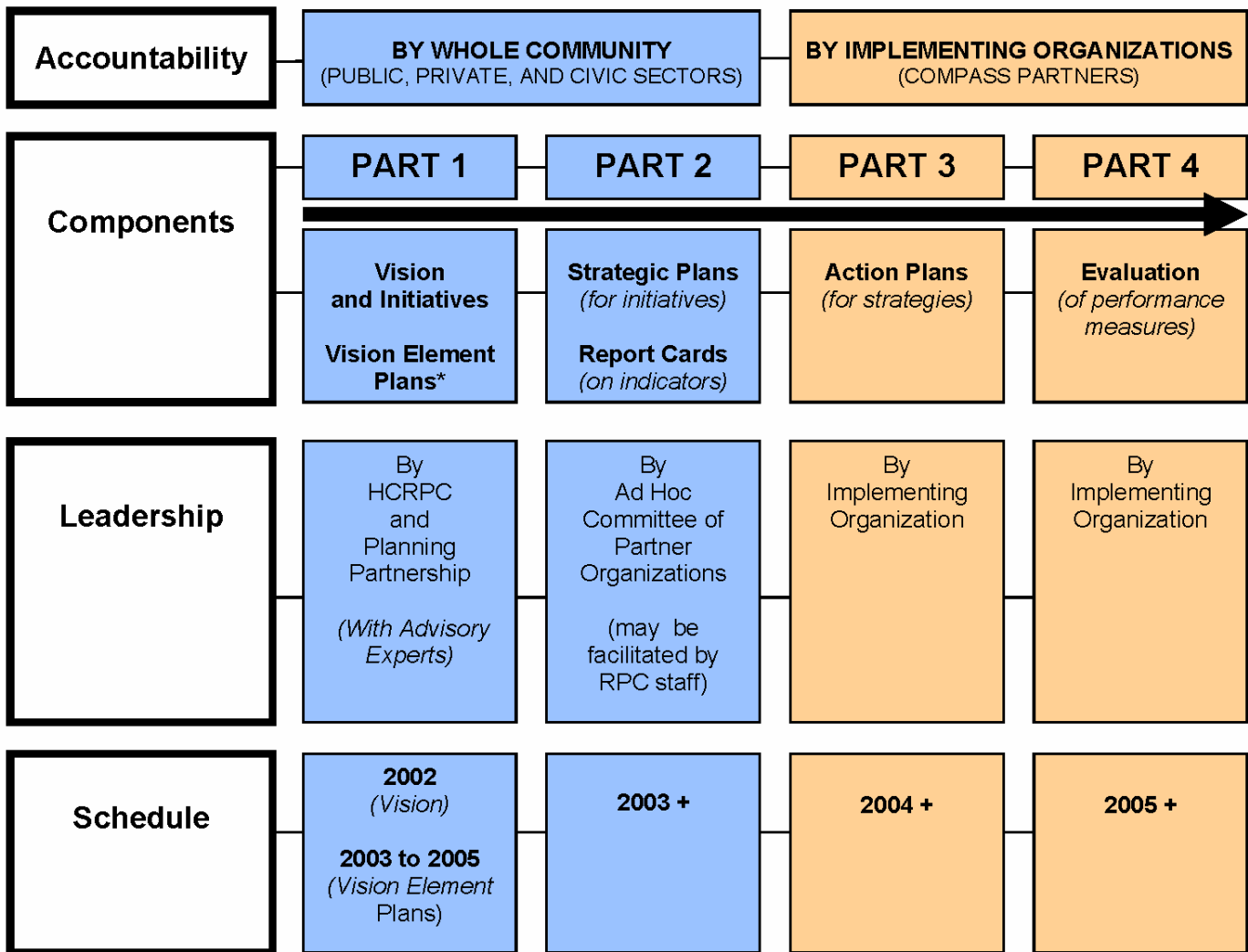
Community COMPASS Report No. 1, *Project Design*, describes in detail the process that was used throughout the project, and that resulted in the strong coalition behind this plan.

Components of Community COMPASS



HAMILTON COUNTY REGIONAL PLANNING COMMISSION / PLANNING PARTNERSHIP / REVISED 6-28-03

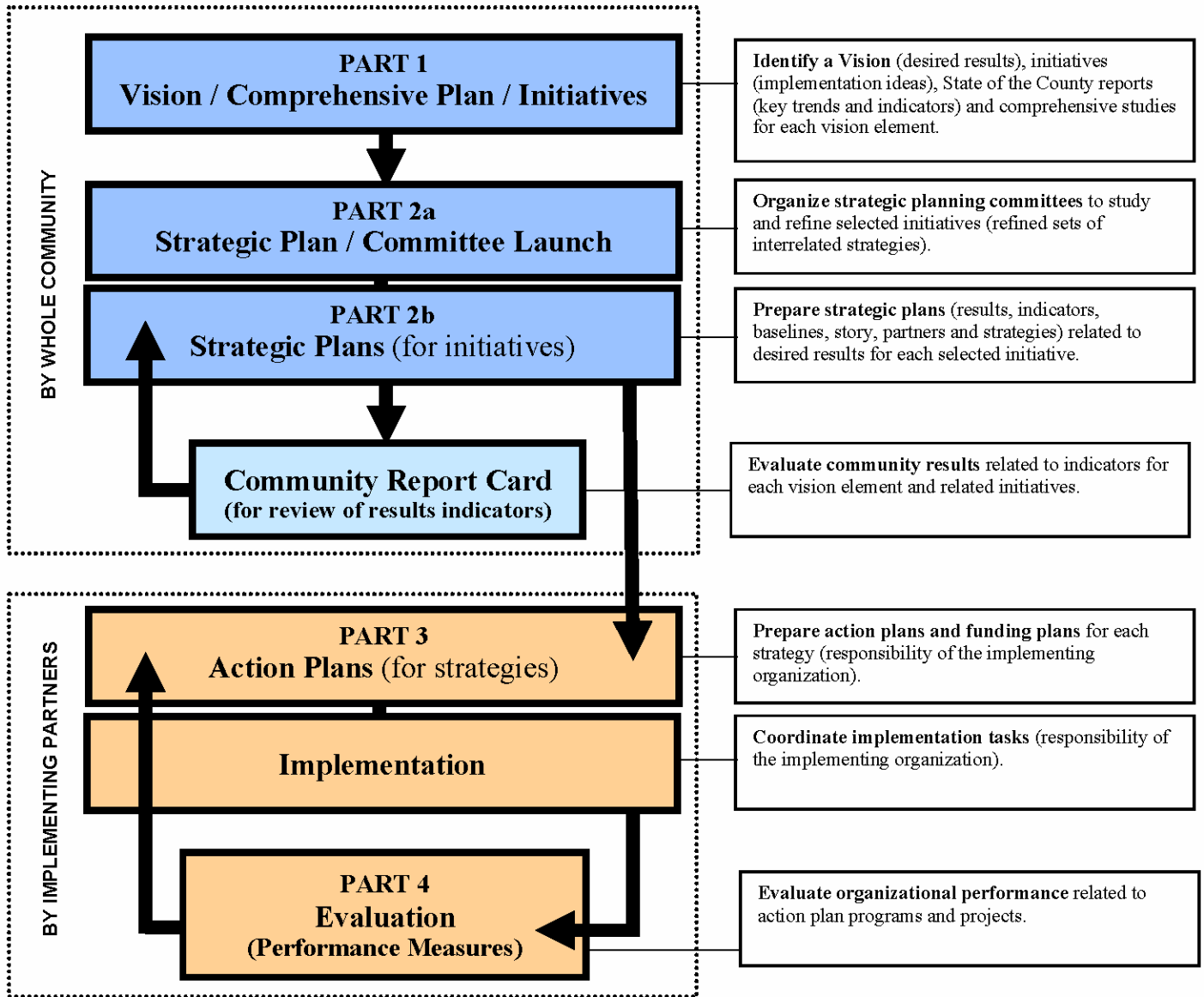
Process, Accountability and Schedule



*** VISION ELEMENTS:**

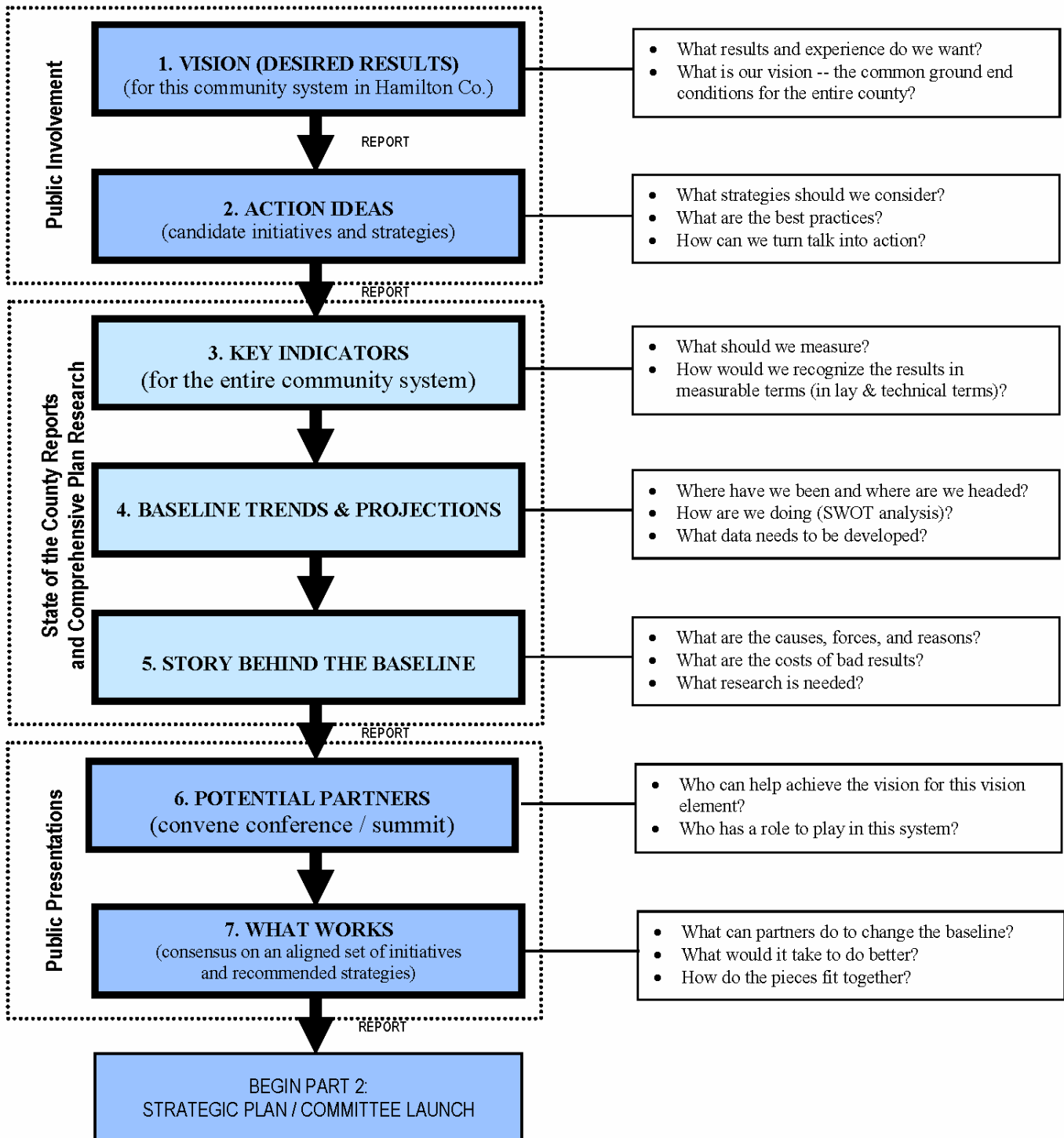
- | | | |
|--|-------------------------------------|--|
| 1. CIVIC ENGAGEMENT AND SOCIAL CAPITAL | 5. EDUCATION | 9. HEALTH AND HUMAN SERVICES |
| 2. COMMUNITY SERVICES | 6. ENVIRONMENT | 10. HOUSING |
| 3. CULTURE AND RECREATION | 7. ENVIRONMENTAL AND SOCIAL JUSTICE | 11. LAND USE AND DEVELOPMENT FRAMEWORK |
| 4. ECONOMY AND LABOR MARKET | 8. GOVERNANCE | 12. MOBILITY |

Process Summary



Part 1: Vision and Comprehensive Plan Research

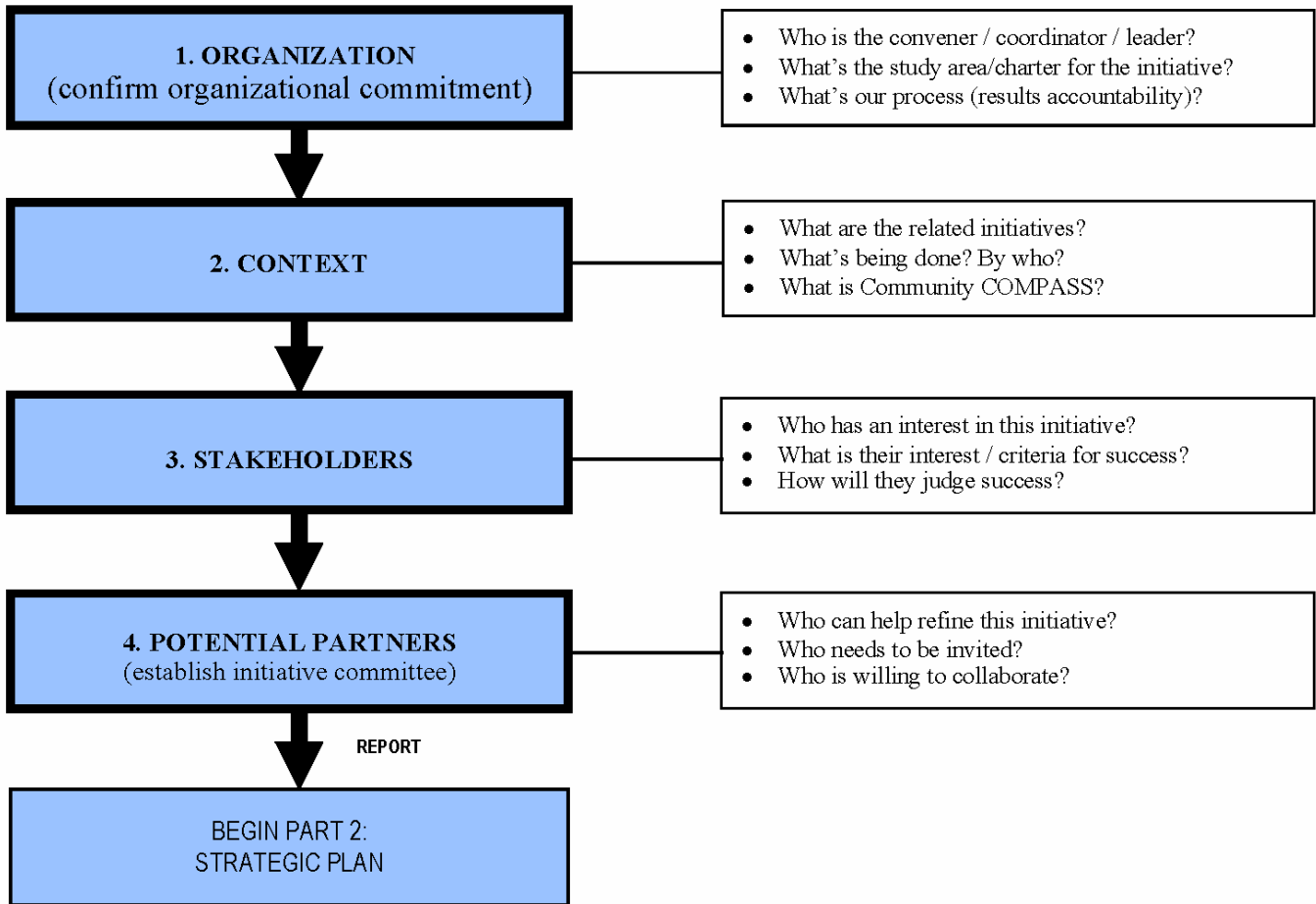
(Identifying a Vision for Each Vision Element* and Preparing a State of the County Report Based on the Vision for Each Vision Element)



COMMUNITY COMPASS

Part 2: Strategic Plans / Committee Launch

(Organizing a Strategic Planning Committee for Each Initiative**)

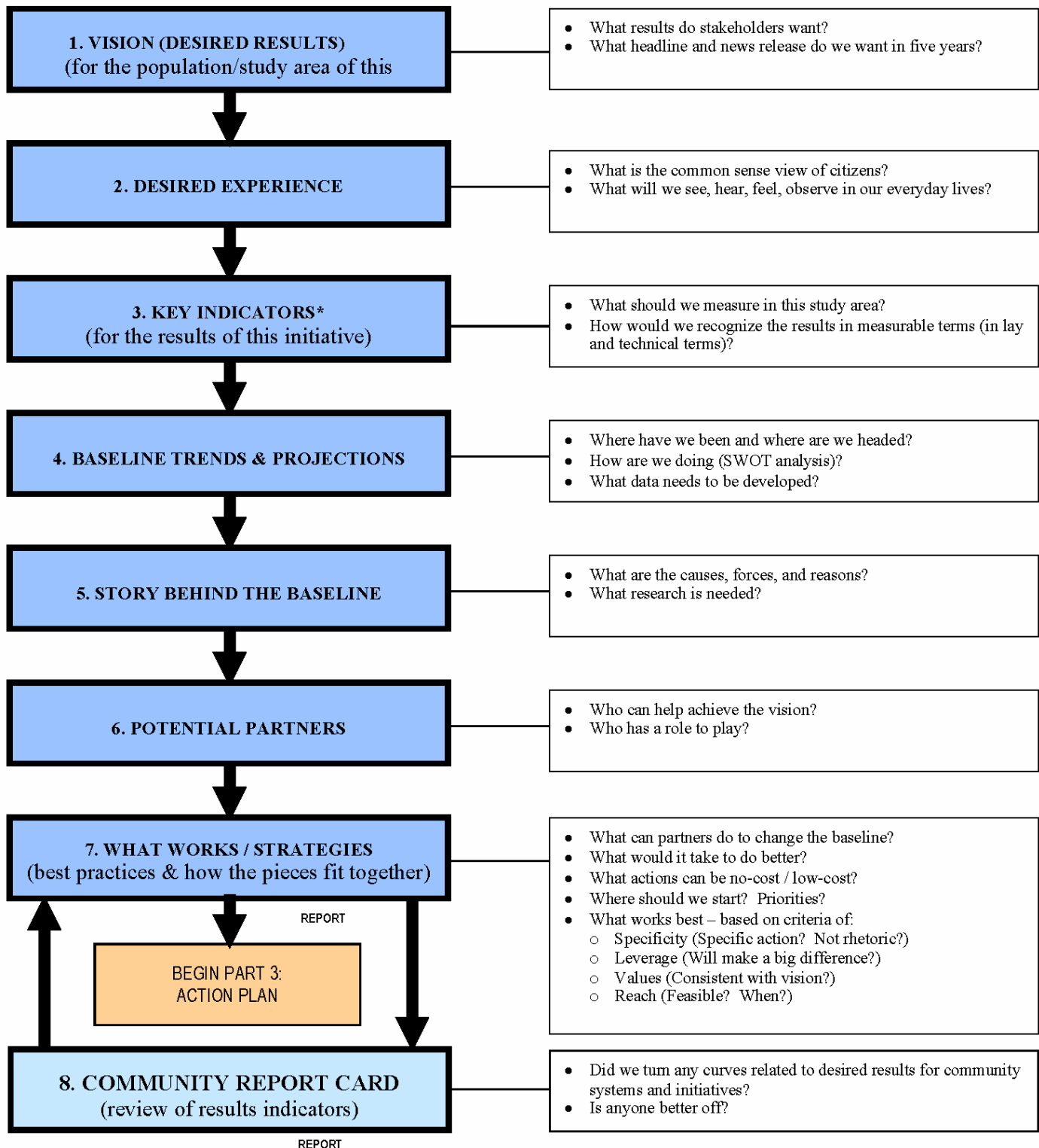


*** VISION ELEMENTS:**

- | | | |
|--|-------------------------------------|--|
| 1. CIVIC ENGAGEMENT AND SOCIAL CAPITAL | 5. EDUCATION | 9. HEALTH AND HUMAN SERVICES |
| 2. COMMUNITY SERVICES | 6. ENVIRONMENT | 10. HOUSING |
| 3. CULTURE AND RECREATION | 7. ENVIRONMENTAL AND SOCIAL JUSTICE | 11. LAND USE AND DEVELOPMENT FRAMEWORK |
| 4. ECONOMY AND LABOR MARKET | 8. GOVERNANCE | 12. MOBILITY |

** An Initiative is an interrelated set of recommended strategies

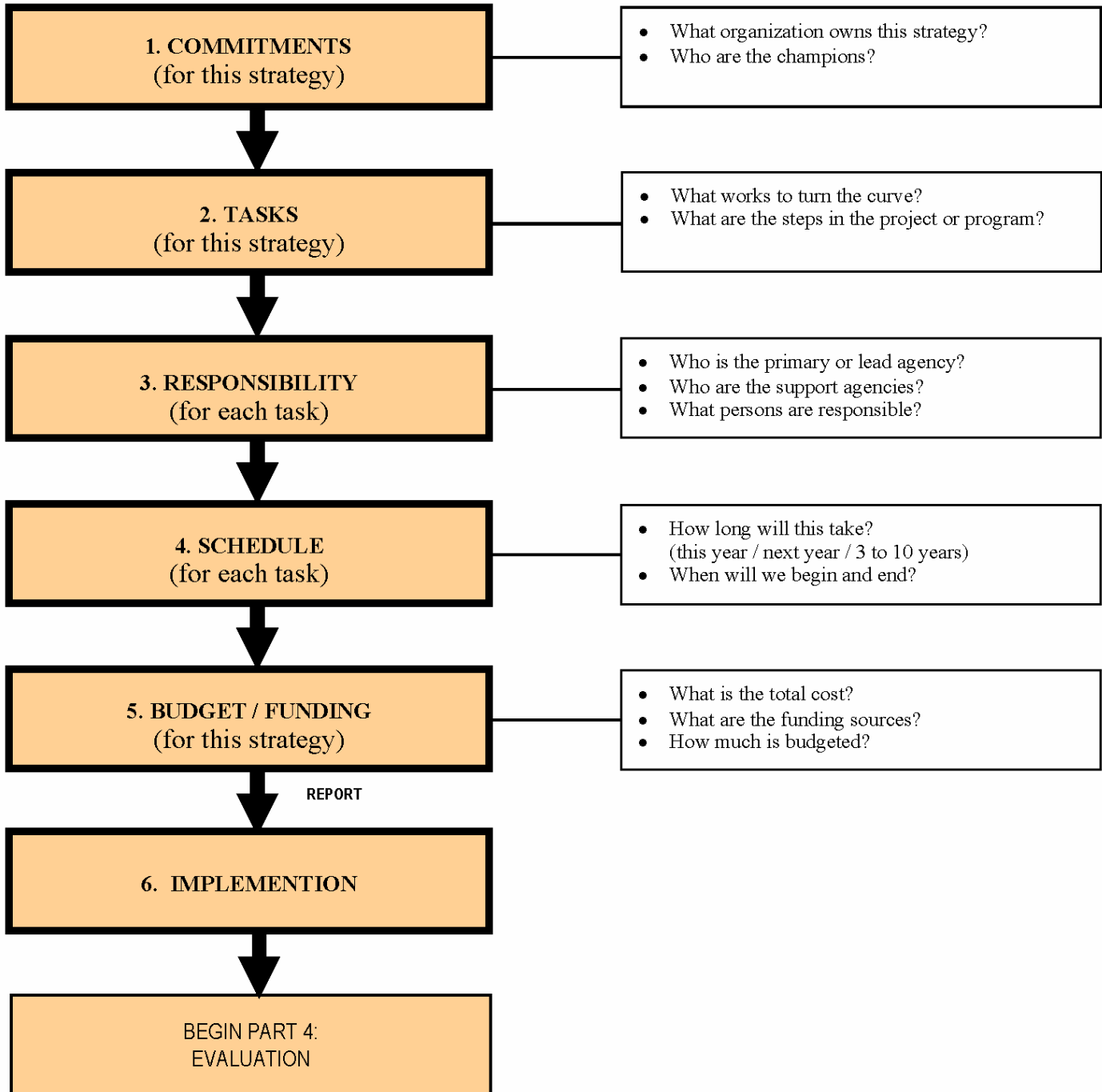
Part 2: Strategic Plans (for initiatives)



*Indicator Rating Criteria: 1) Communication Power; 2) Proxy Power; 3) Data Power

Part 3: Action Plans (for strategies)

Partner organizations prepare and implement plans for programs and projects.



Part 4: Evaluation (for performance development)

Partner organizations evaluate and develop their programs and projects.

